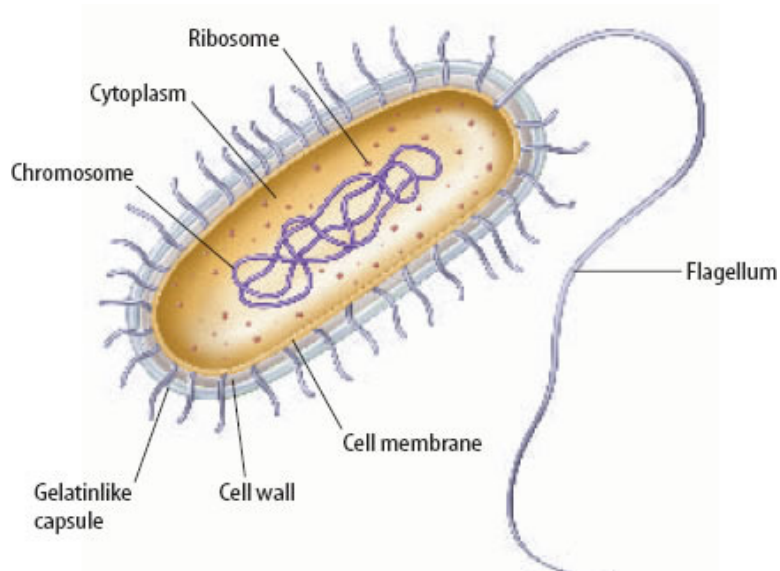


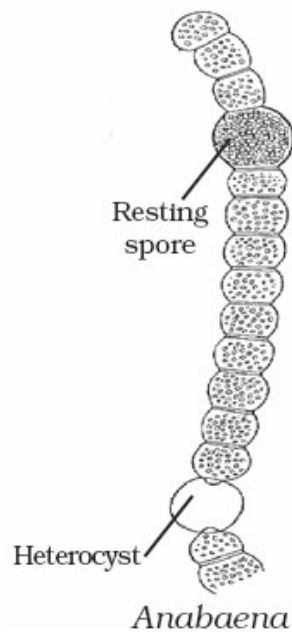
**Class IX: Biology**  
**Chapter 7: Diversity In Living Organisms**

**Top diagrams**

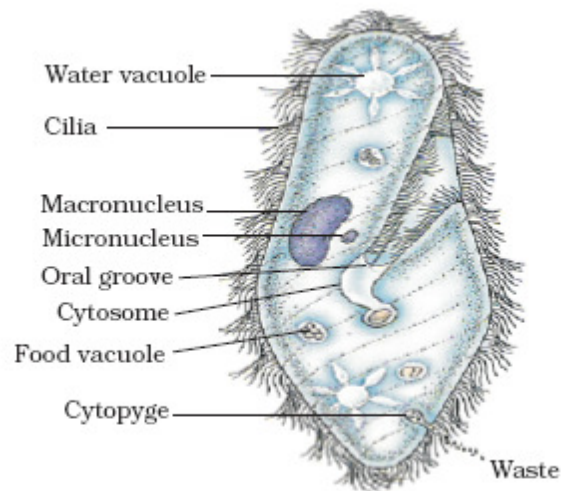
**A) Kingdom Monera**



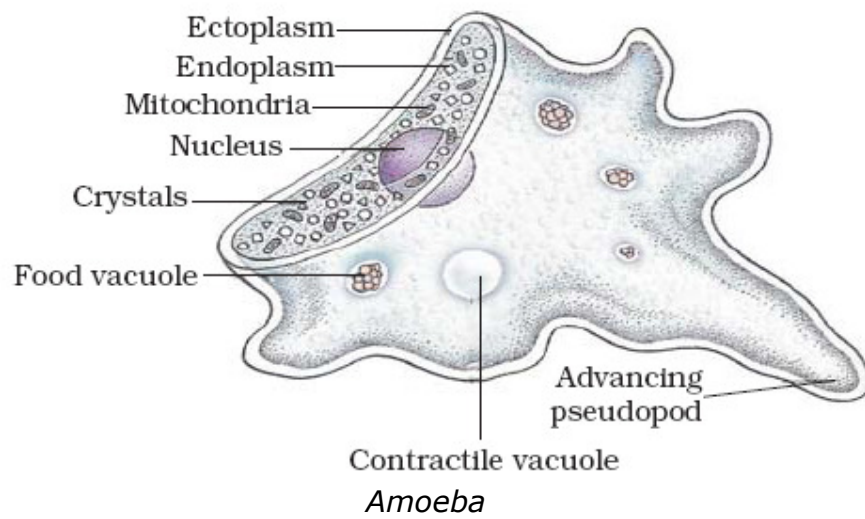
Bacteria



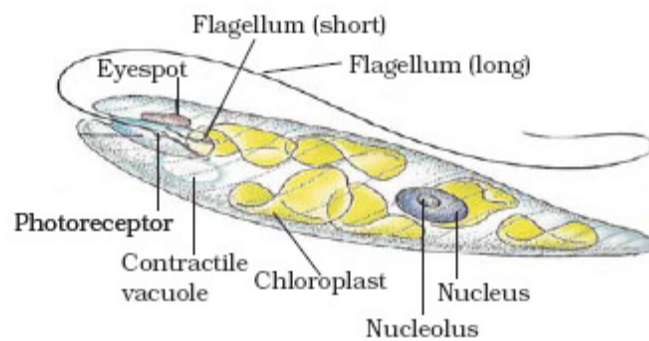
## B) Kingdom Protista



*Paramecium*

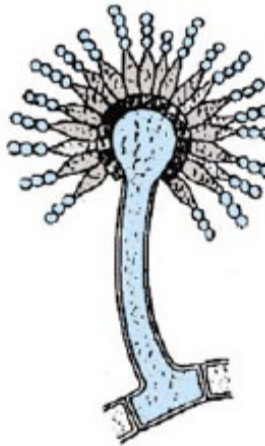


*Amoeba*



*Euglena*

### C) Kingdom Fungi



*Aspergillus*



*Penicillium*



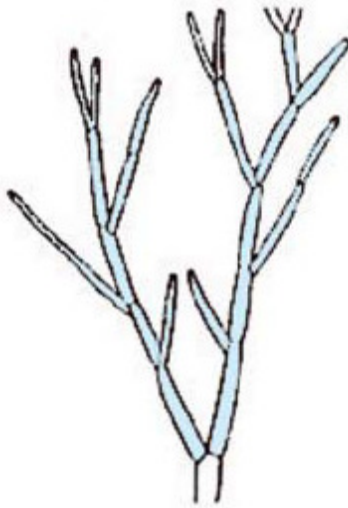
*Agaricus*

**D) Kingdom Plantae**

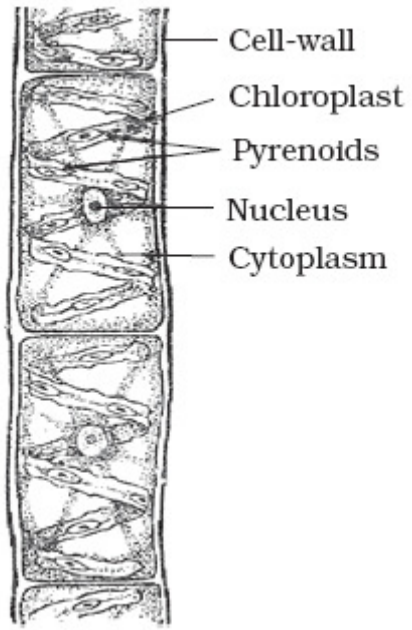
**i) Division Thallophyta**



*Ulothrix*



*Cladophora*



*Spirogyra*

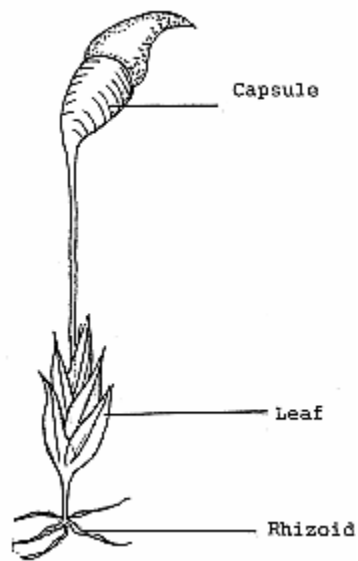


*Chara*

ii) **Division Bryophyta**

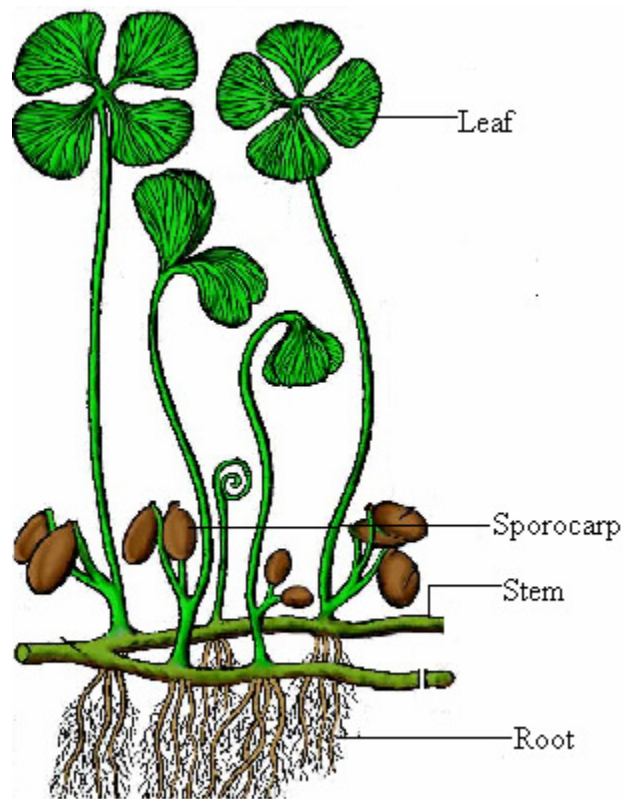


*Marchantia*



*Funaria*

iii) Division Pteridophyta

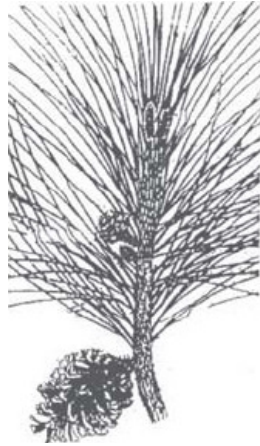


*Marsilea*



Fern

**iv) Division Gymnospermae**



*Pinus*



*Cycas*

**v) Division Angiospermae**



*Ipomoea*

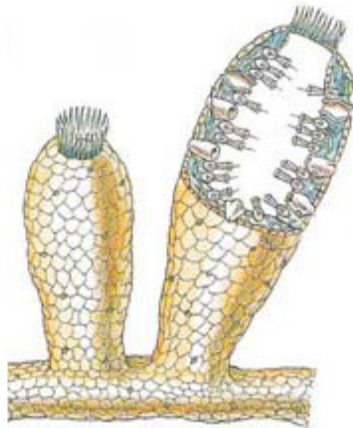


**E) Kingdom Animalia**

**i) Phylum Parazoa**



*Euplectella*

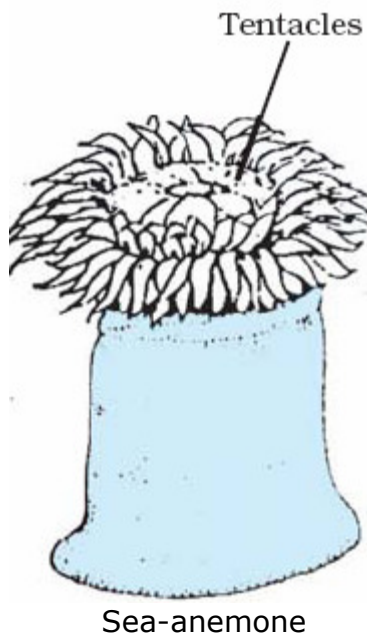
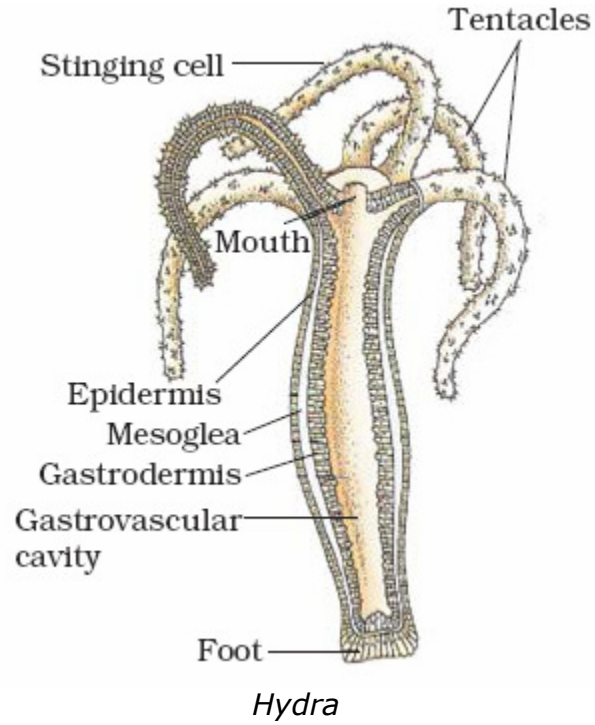


*Sycon*

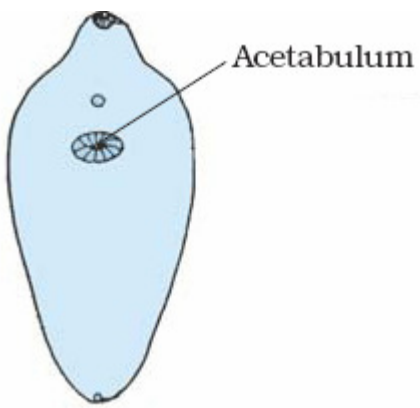


*Spongilla*

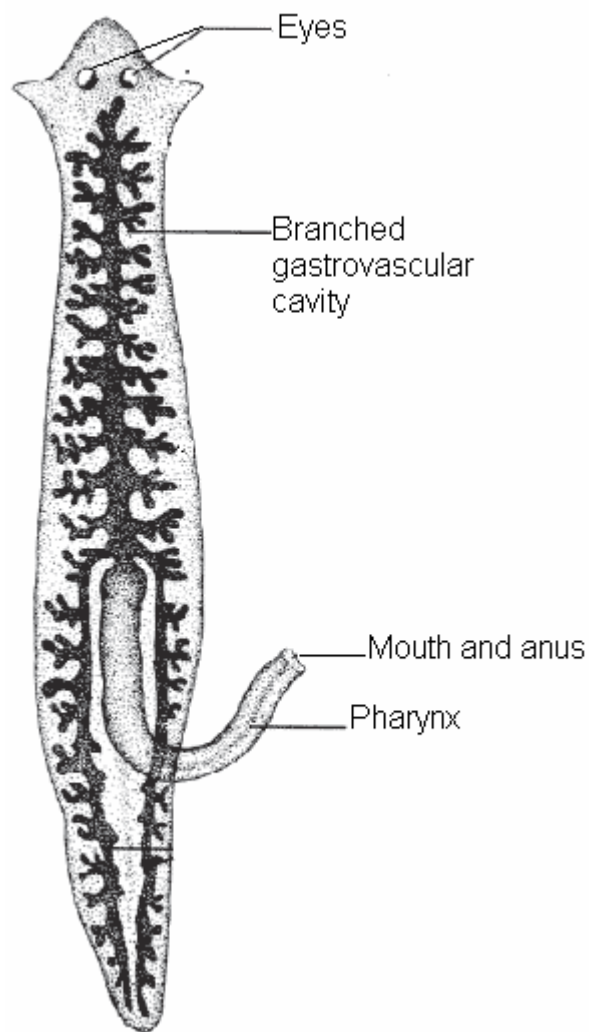
**ii) Phylum Coelenterata**



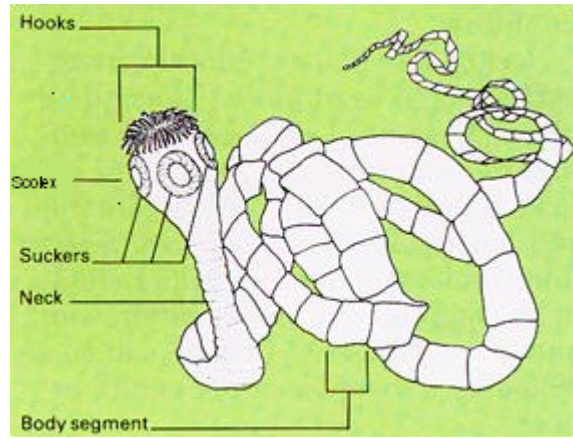
iii) **Phylum Platyhelminthes**



Liver-fluke

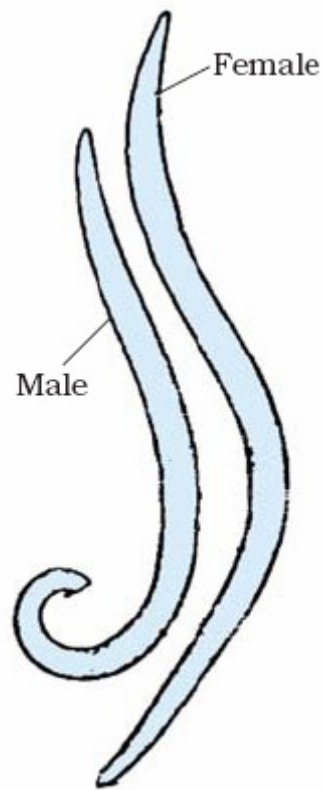


*Planaria*



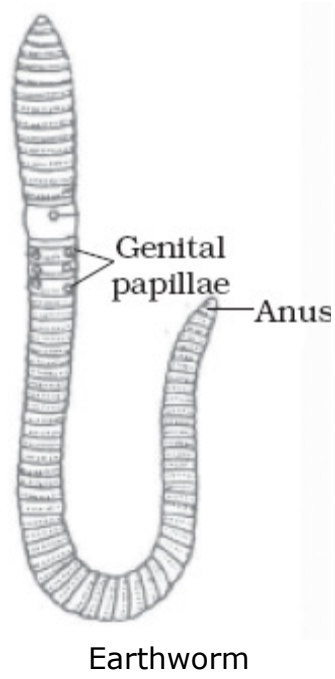
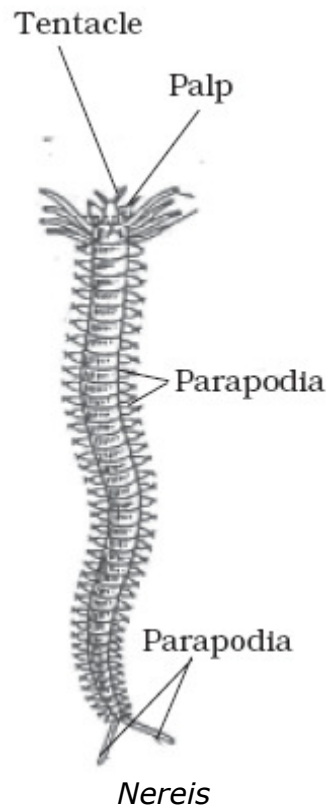
Tapeworm

**iv) Phylum Nematoda**



*Ascaris*

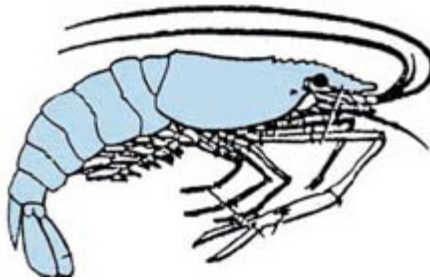
**v) Phylum Annelida**



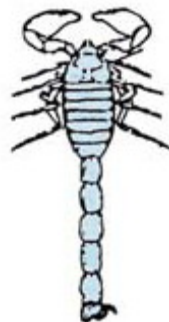


Leech

**vi) Phylum Arthropoda**



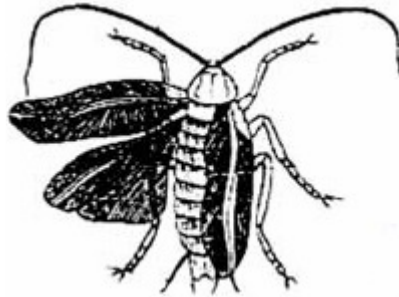
*Palaemon* (prawn)



*Palamnaeus* (scorpion)



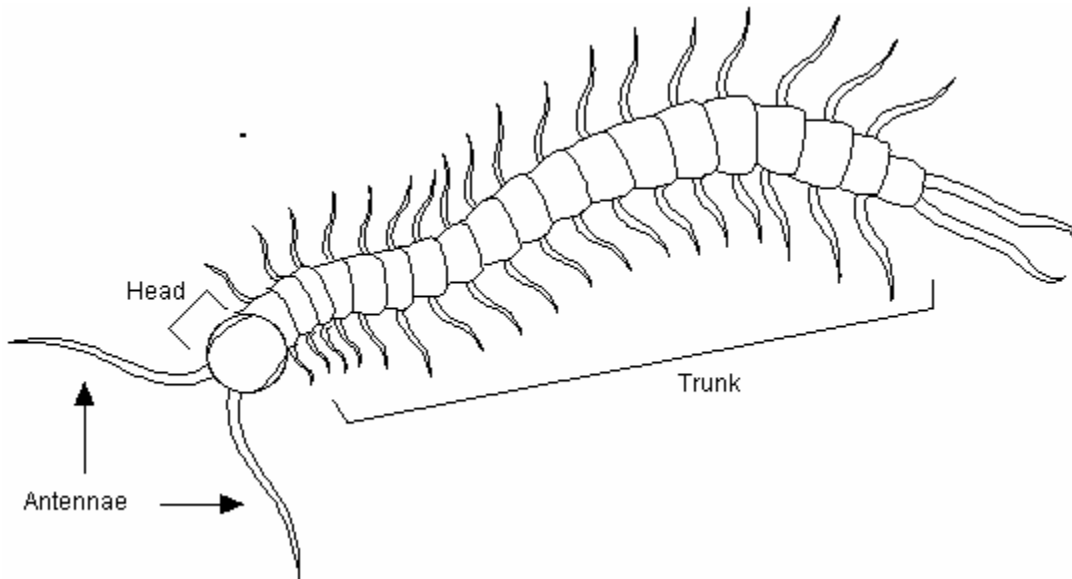
*Aranea* (spider)



*Periplaneta* (cockroach)

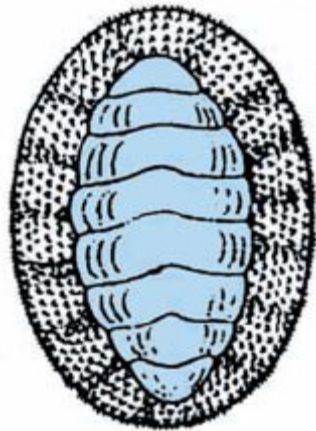


Butterfly (*Pieris*)



Centipede

vii) **Phylum Mollusca**



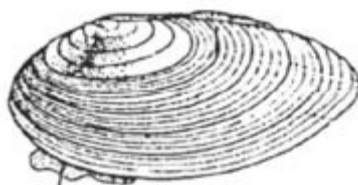
*Chiton*



*Pila*



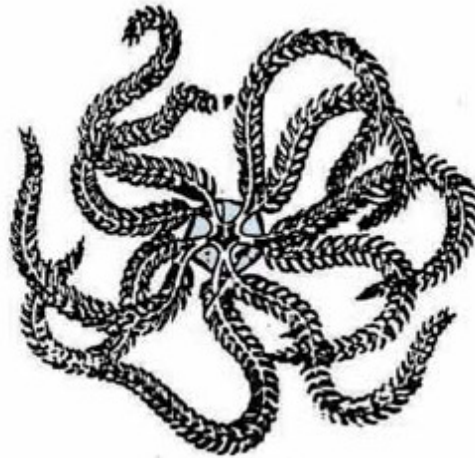
*Octopus*



*Unio*



**viii) Phylum Echinodermata**



*Antedon* (feather-star)

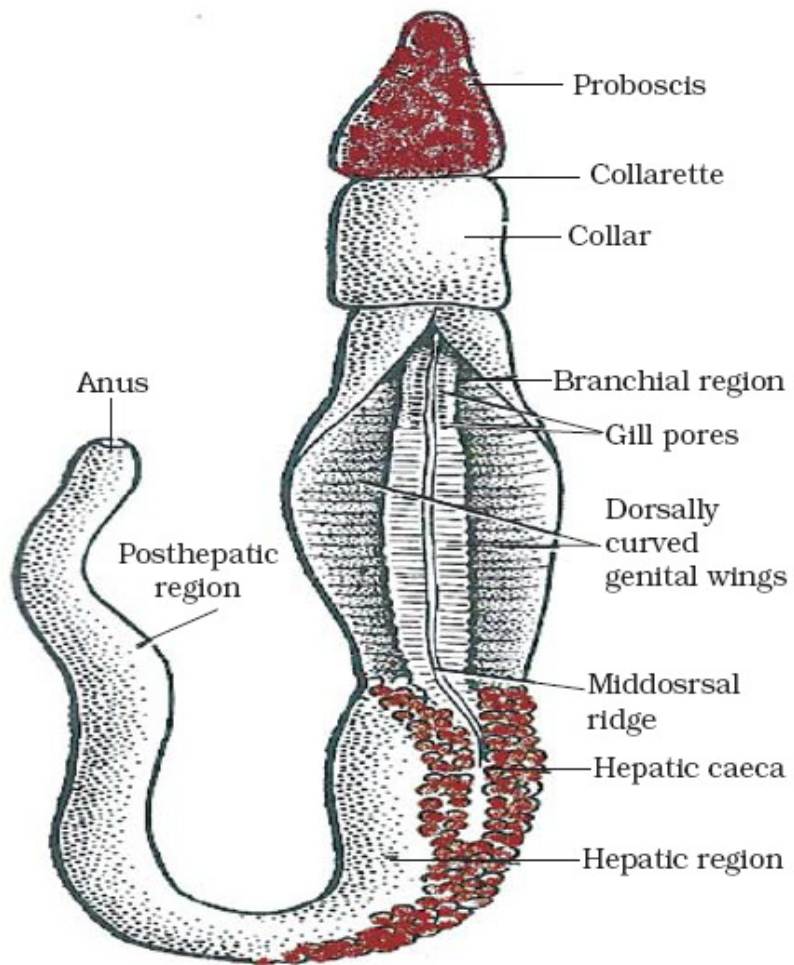


*Holothuria* (sea cucumber)



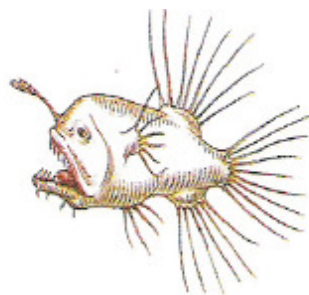
*Asterias* (star fish)

**ix) Protochordata**

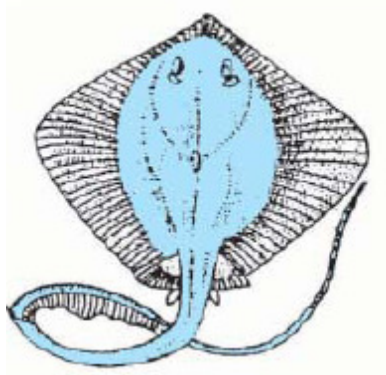


*Balanoglossus* (A Protochordata)

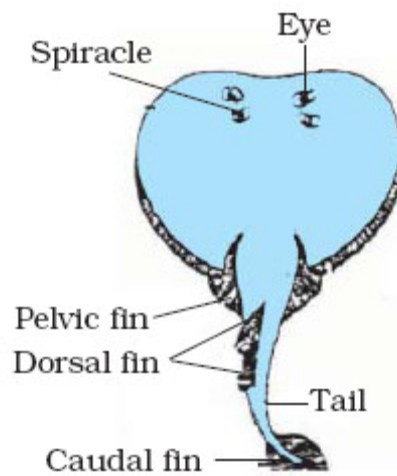
**x) Vertebrata**



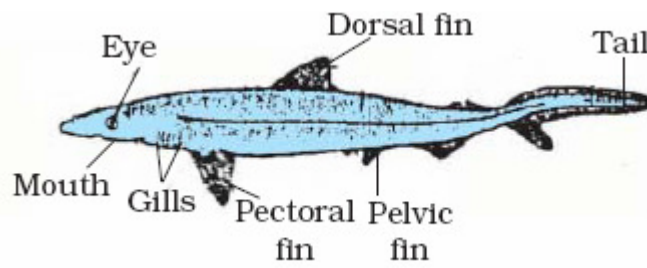
*Caulophryne jordani* (Angler fish)



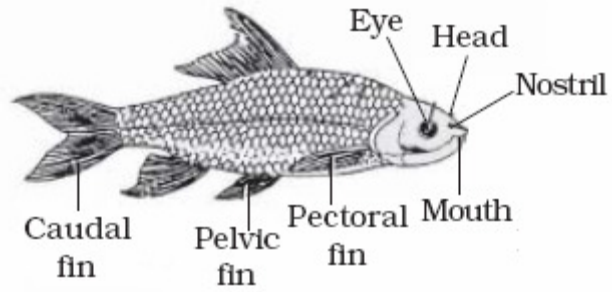
Sting ray



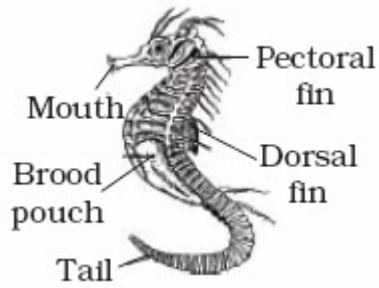
*Torpedo* (Electric ray)



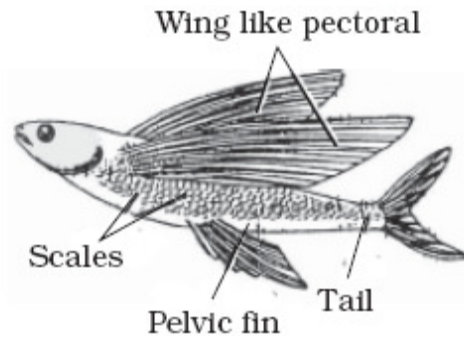
*Scoliodon* (Dog fish)



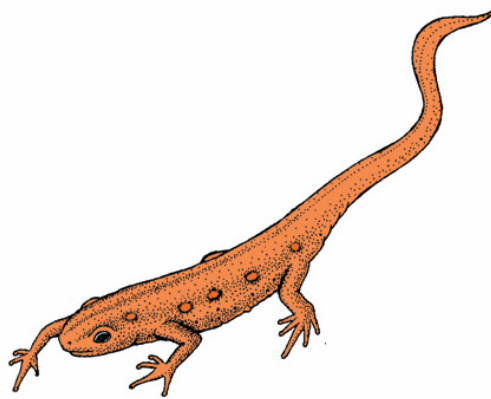
*Labeo rohita* (Rohu)



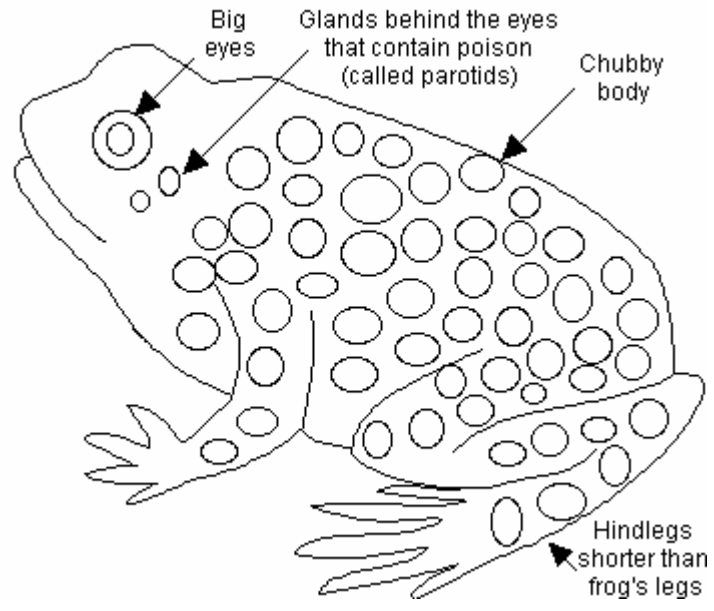
*Hippocampus* - male (sea horse)



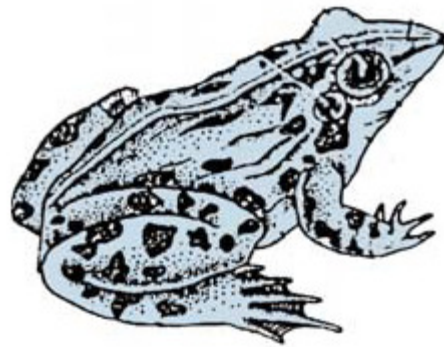
*Exocoetetus* (Flying fish)



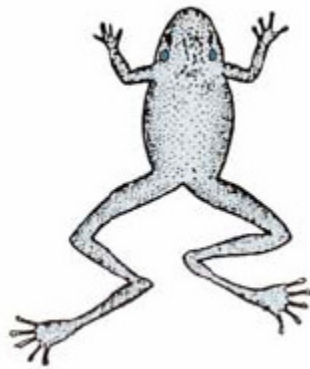
*Salamander*



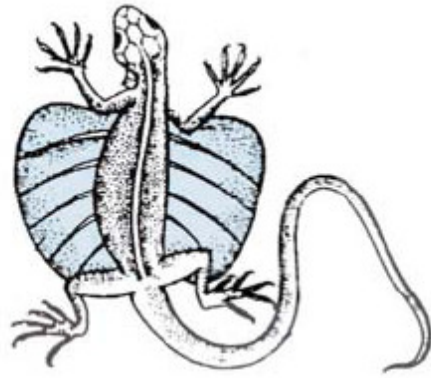
Toad



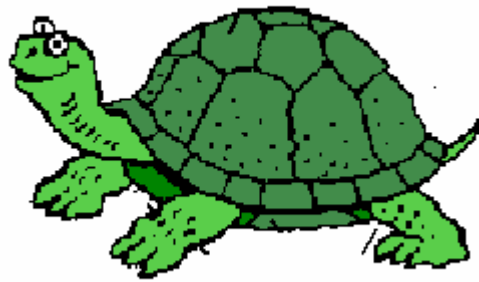
*Rana tigrina* (Common frog)



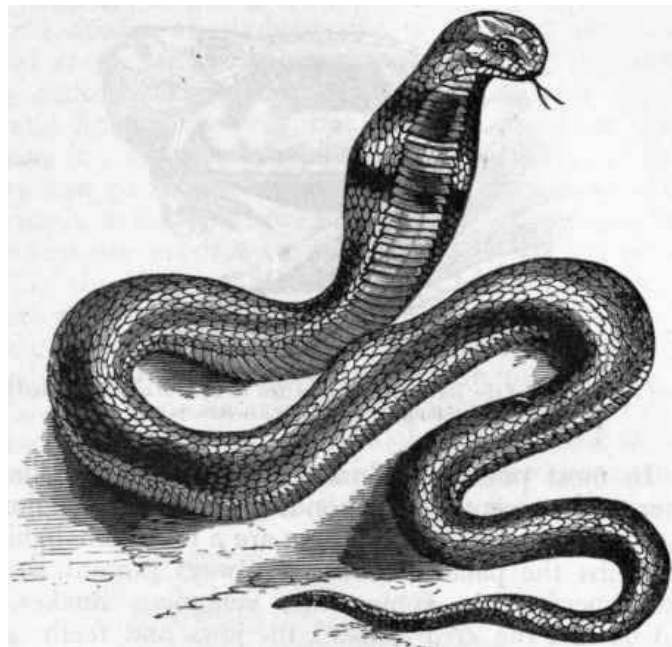
*Hyla* (Tree frog)



*Draco* (flying lizard)



Turtle



Snake



*Hemidactylus* (House wall lizard)



Pigeon



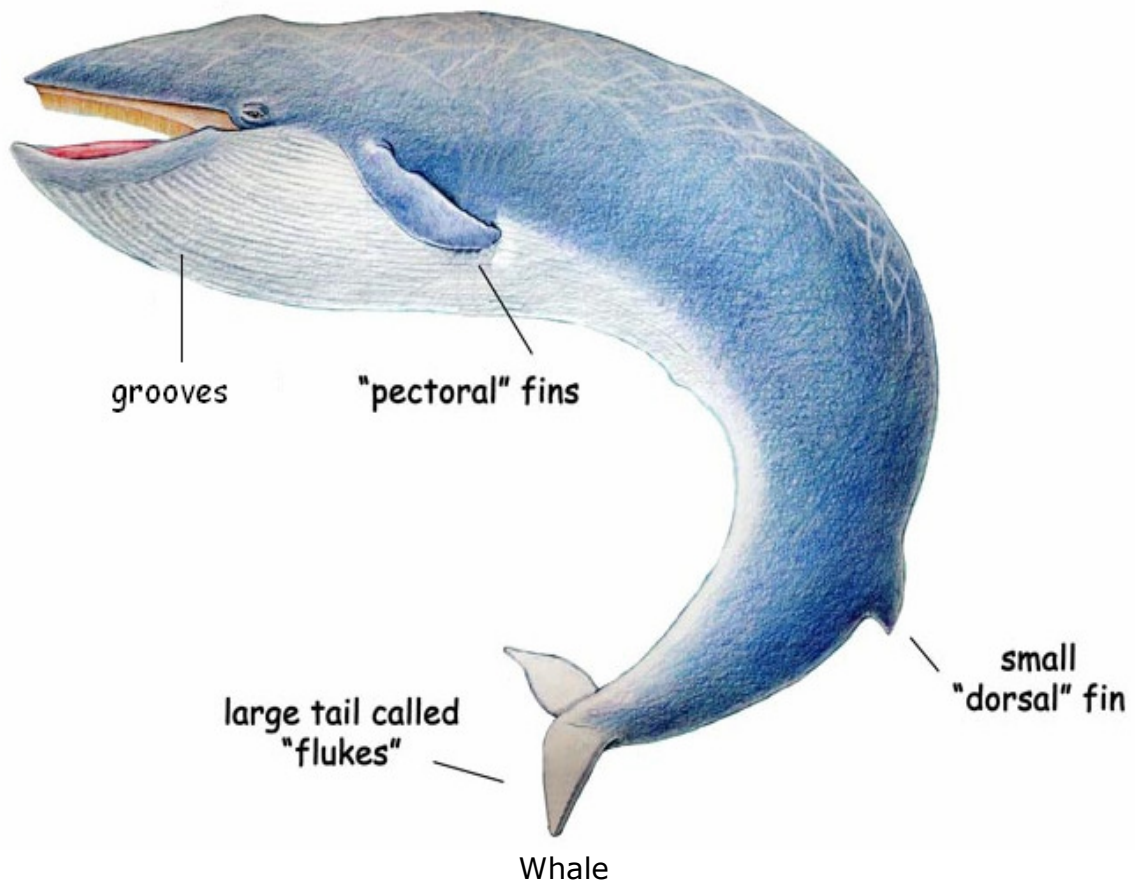
Crow



*Ciconia ciconia* (White stork)



*Struthio camelus* (Ostrich)



grooves

"pectoral" fins

large tail called  
"flukes"

small  
"dorsal" fin

Whale





Cat

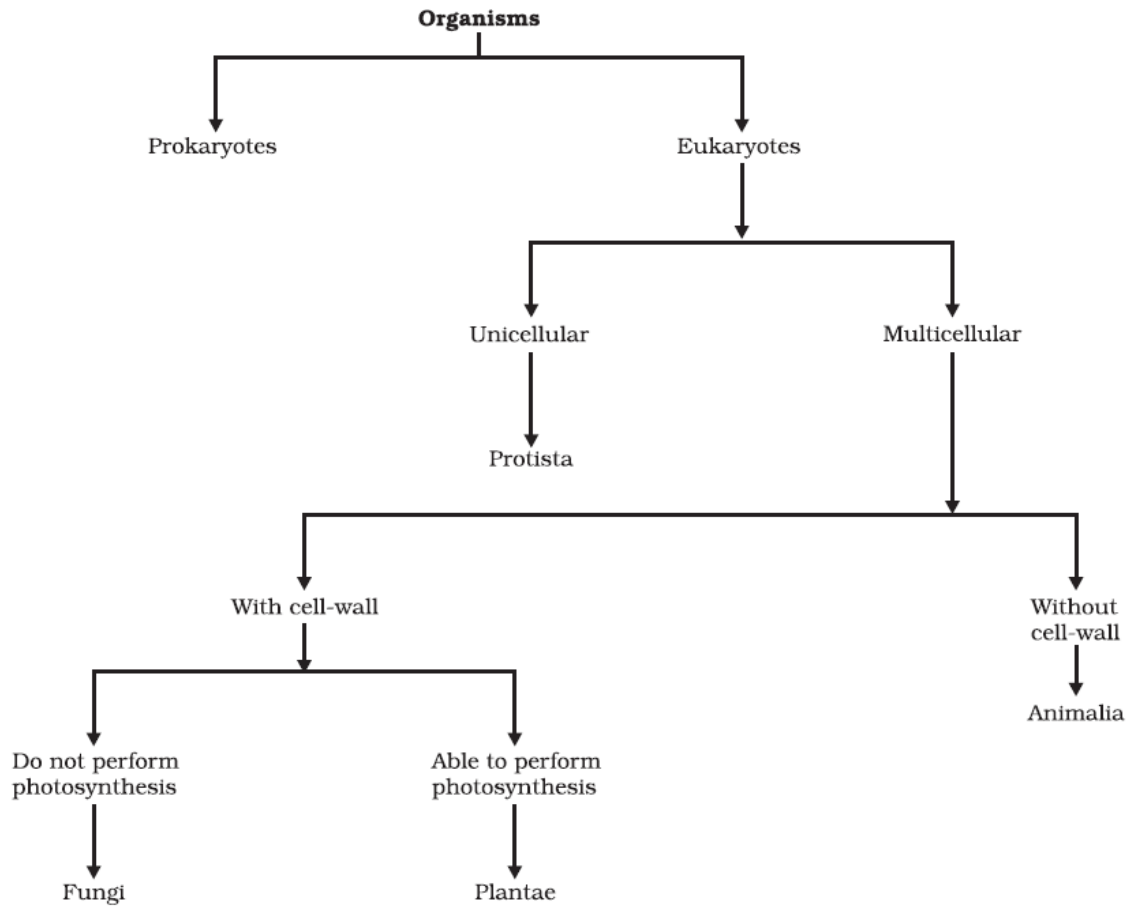


Rat

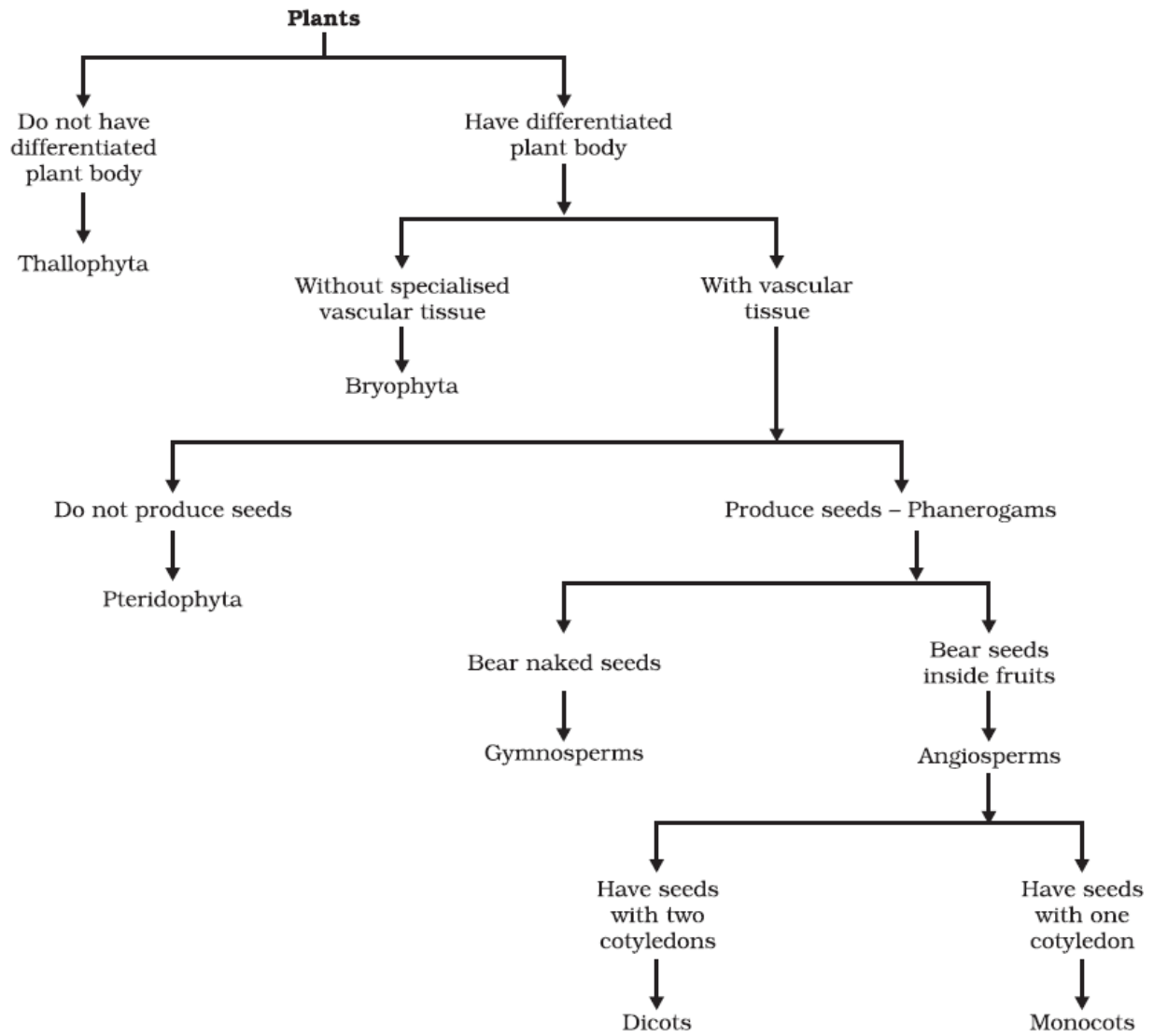


Bat

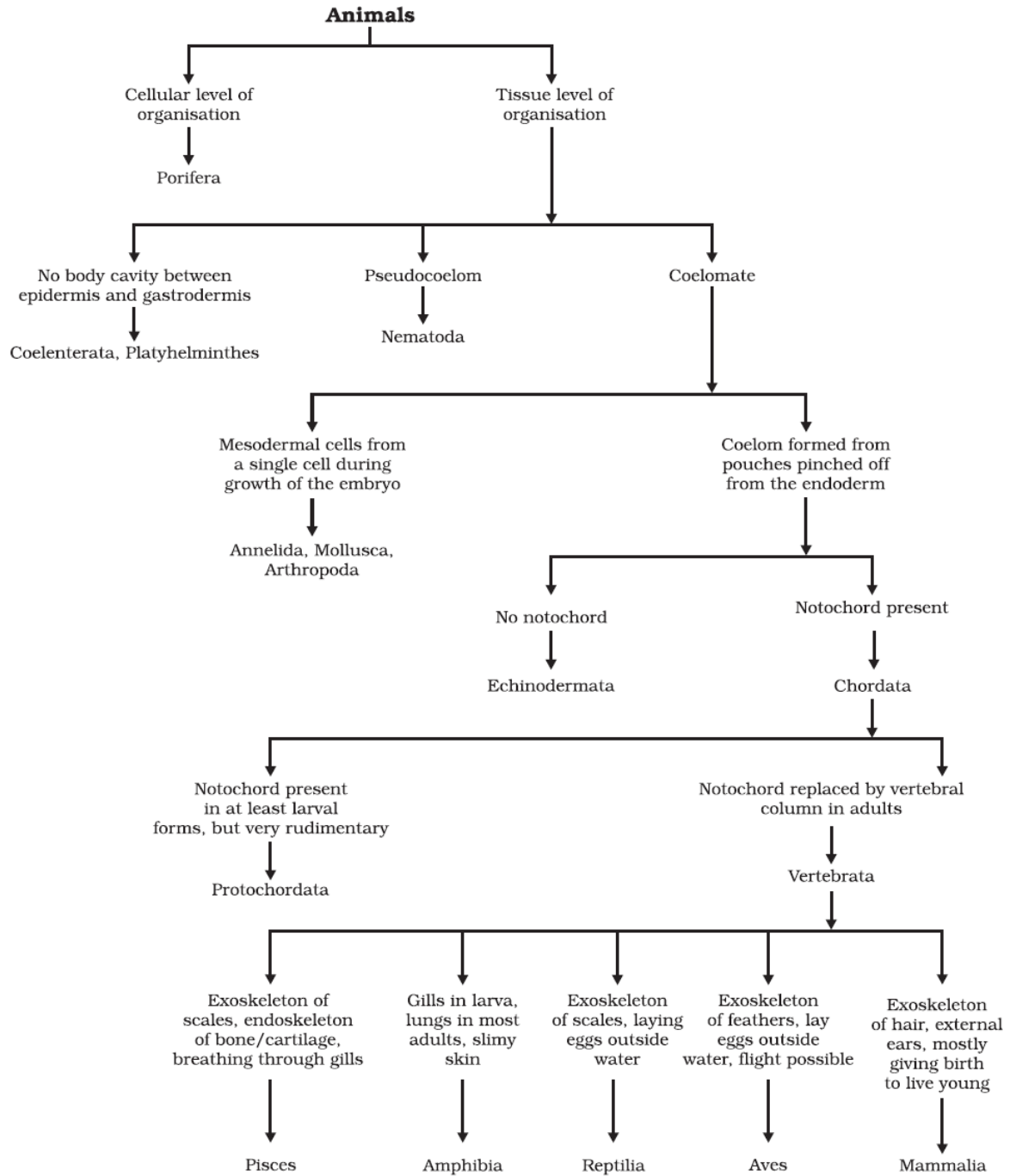
## Top flow-charts



Basis of five-kingdom classification.



Classification of plants



Classification of animals